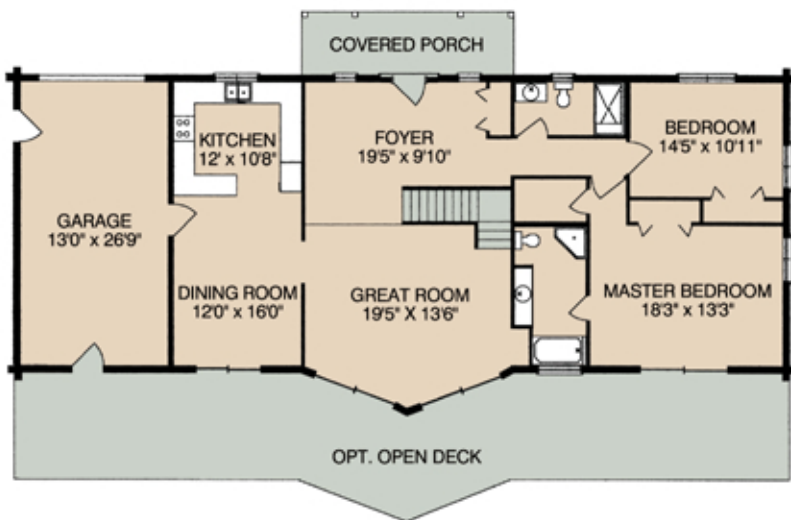
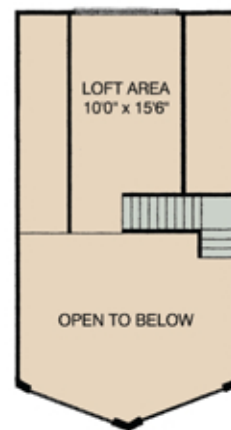


STYLISH PANORAMA

Contemporary upscale log home features an architectural prow front, large entry foyer, great room with cathedral ceilings, garage, two bedrooms and two baths - all on the main level. For extra storage and bedrooms, ask to look at the optional finished basement



Main Floor Plan



Second Floor Plan

Overall Dimension: 32' x 74'

Living Area: 2,064 sq. ft. / Total with Finished Basement: 3,552 sq. ft. / Garage: 378 sq. ft.